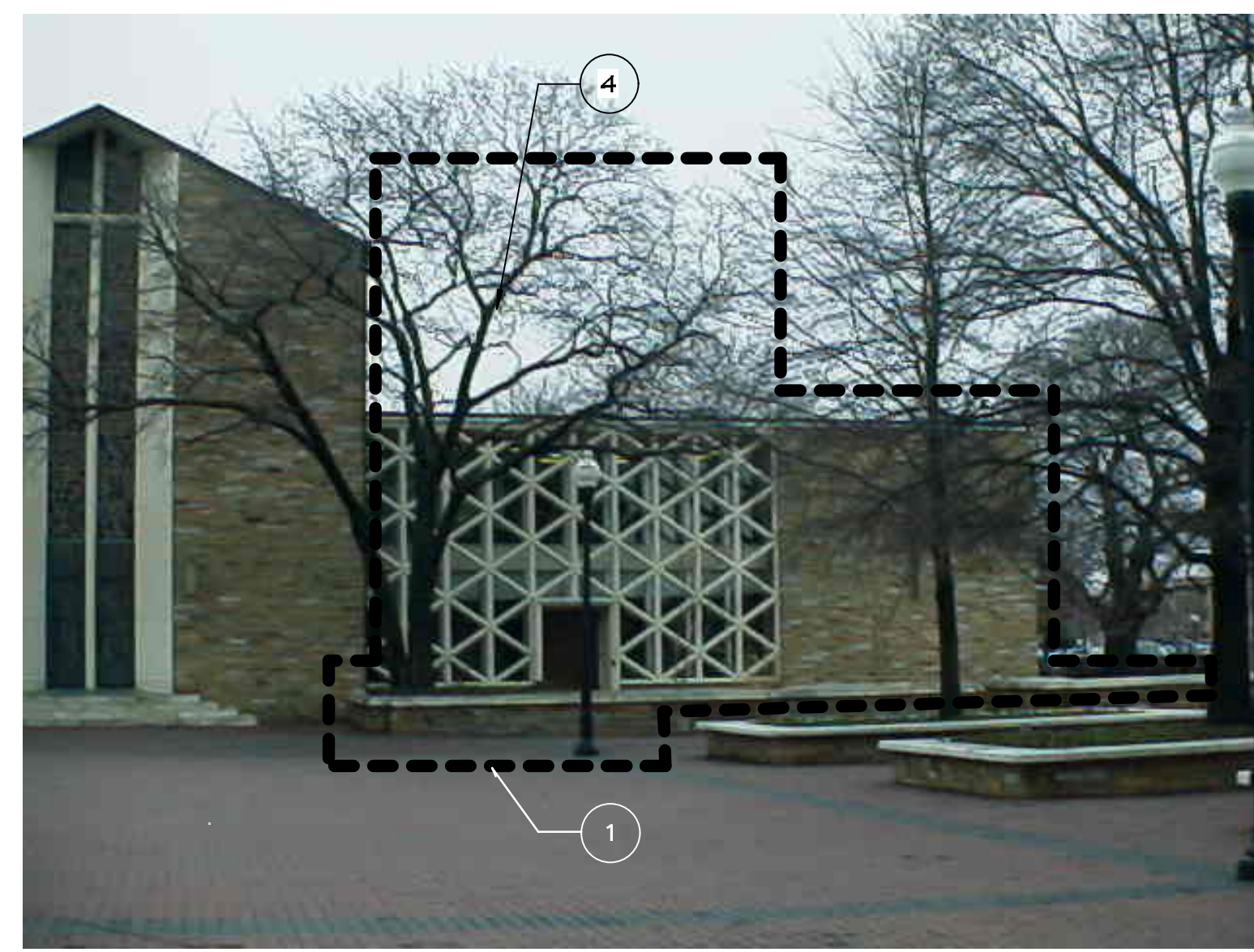




3 NORTH 1  
1/8" = 1'-0"



2 NORTH 2  
1/8" = 1'-0"



1 NORTHWEST  
1/8" = 1'-0"



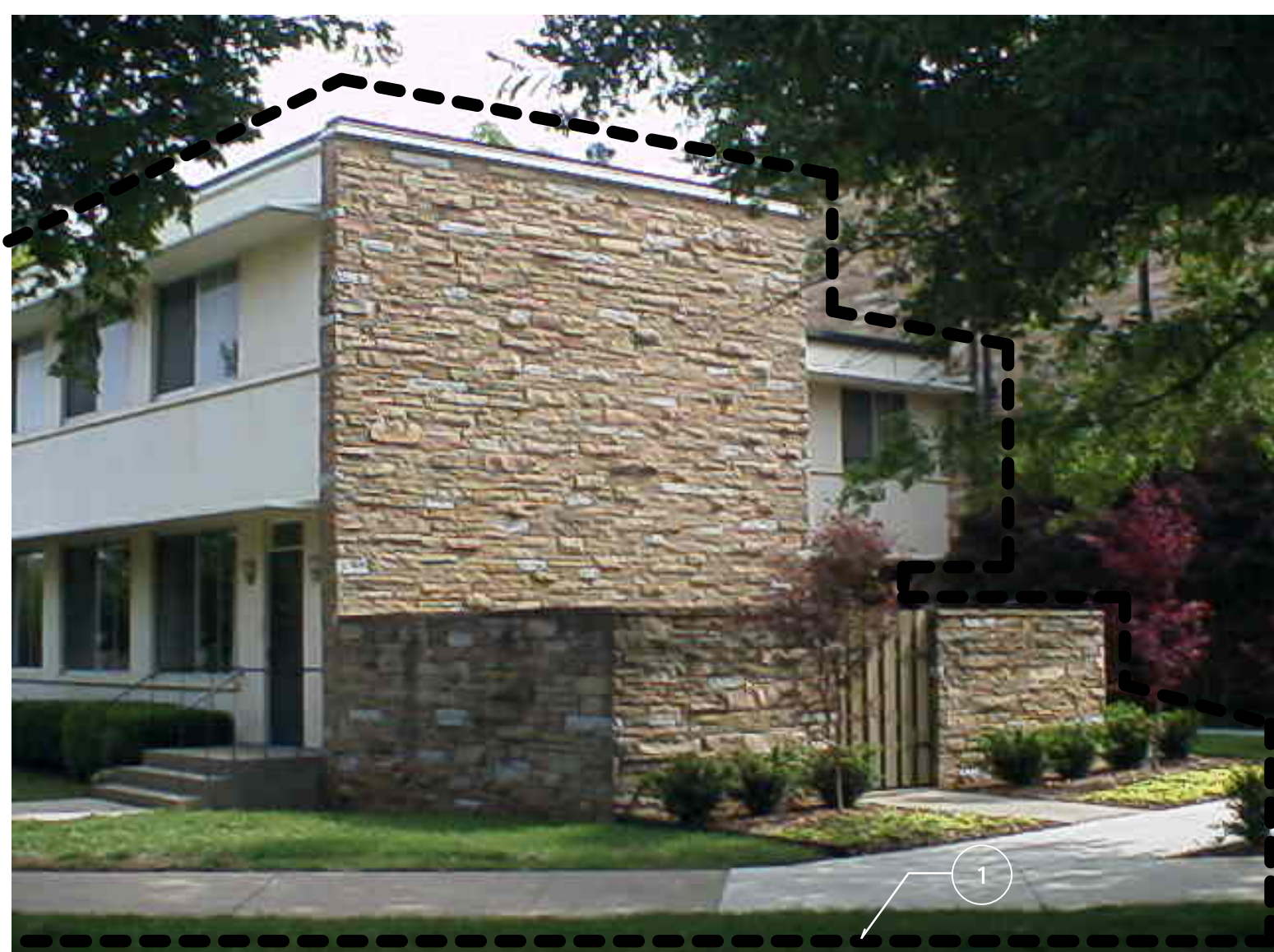
6 WEST 1  
1/8" = 1'-0"



5 WEST 2  
1/8" = 1'-0"



4 WEST 3  
1/8" = 1'-0"



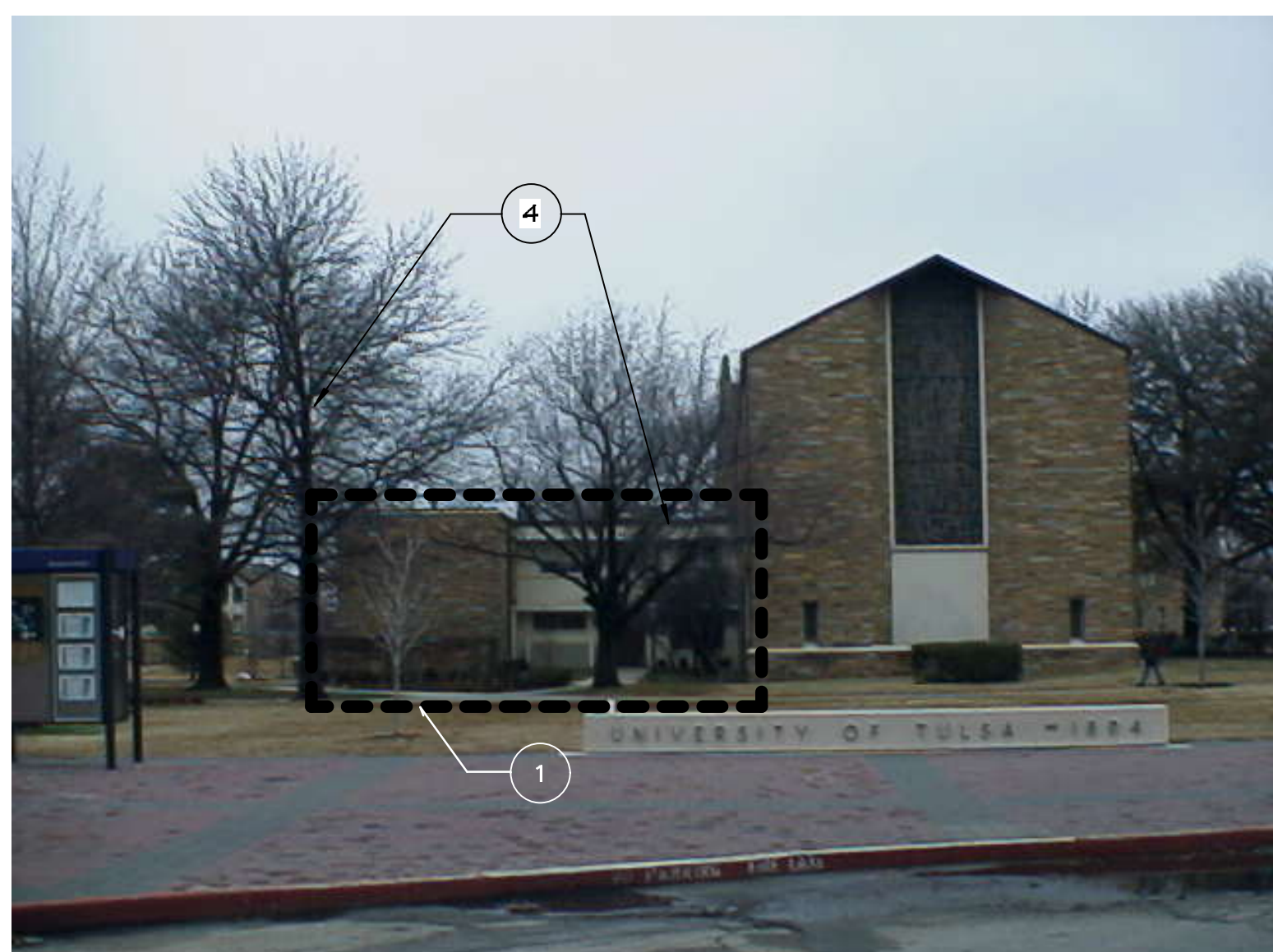
9 SOUTHWEST  
1/8" = 1'-0"



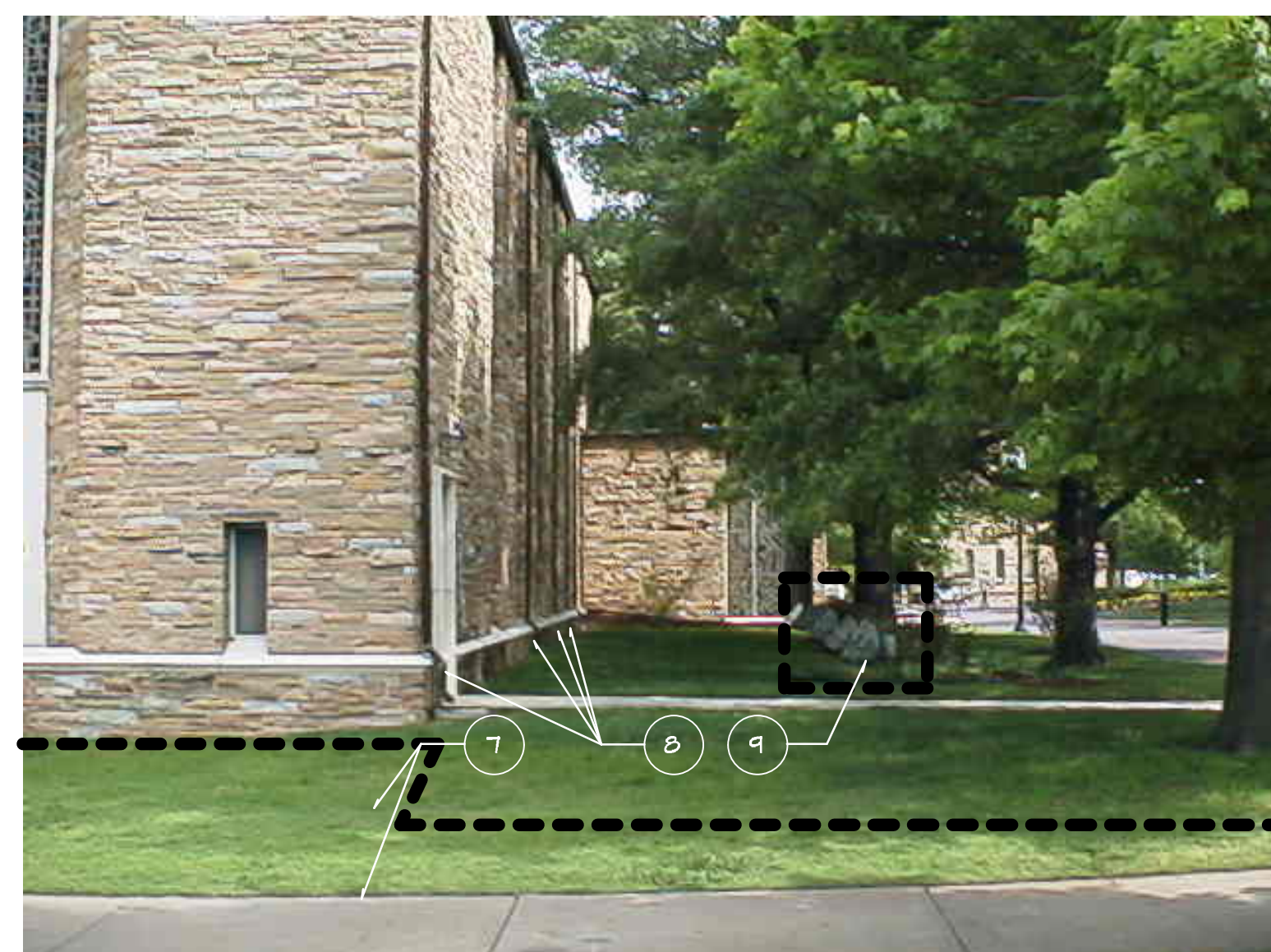
8 SOUTH 1  
1/8" = 1'-0"



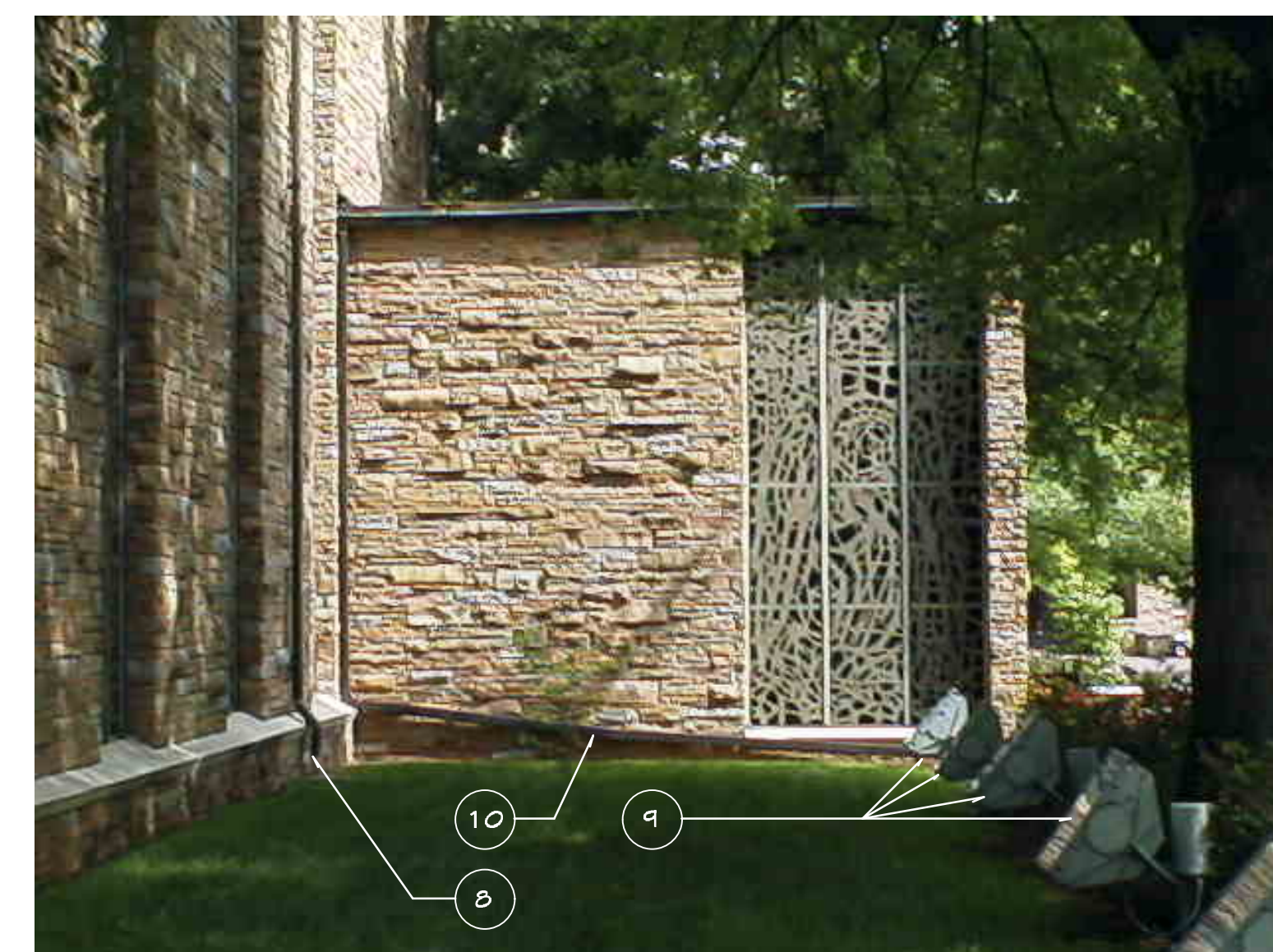
7 SOUTH 2  
1/8" = 1'-0"



12 SOUTH 3  
1/8" = 1'-0"



11 SOUTH 4  
1/8" = 1'-0"



10 SOUTHEAST  
1/8" = 1'-0"

EXTERIOR VIEWS - KEYNOTES

- 1 Area of demolition.
- 2 Remove and deliver to Physical Plant, 3015 E. 8th Street.
- 3 Remove existing wall cap & replace with new stone cap. Refer to 9/AD.4
- 4 Remove existing tree per landscape plans.
- 5 Exist structure to remain. Refer to Architectural Plans for alterations.
- 6 Remove existing cast stone panels and prep. for new panels Re: A.1.1
- 7 Refer to landscape plans.
- 8 Downspout to be replaced in new locations per A3.3.
- 9 Remove exist lighting Refer to LT 1.0
- 10 Remove horizontal section of down spouts refer to A3.4

PROJECT

REMODEL AND  
ADDITION TO:  
SHARP CHAPEL

Sharp Memorial  
Chapel

THE UNIVERSITY OF  
TULSA  
600 SOUTH  
COLLEGE AVENUE  
TULSA, OKLAHOMA  
74104

ARCHITECT  
**BRIAN  
LLOYD  
FREESE**  
ARCHITECTURE  
6144 S. LEVIN  
SUITE 200  
TULSA, OKLAHOMA  
74139-1001  
TELEPHONE  
918.744.7887

CONSULTANT

SEAL

APPROVAL/DATE

KEYPLAN

DRAWN BY  
DF / GT / G.M.V. / J.M.S

SCALE  
1/8" = 1'-0"

DATE  
11/08/02

REVISED  
11/08/02

PROJECT NO. FILE NAME

0101

PAGE

EXISTING EXTERIOR VIEWS